



220 S

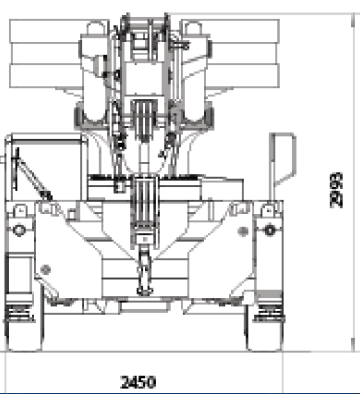
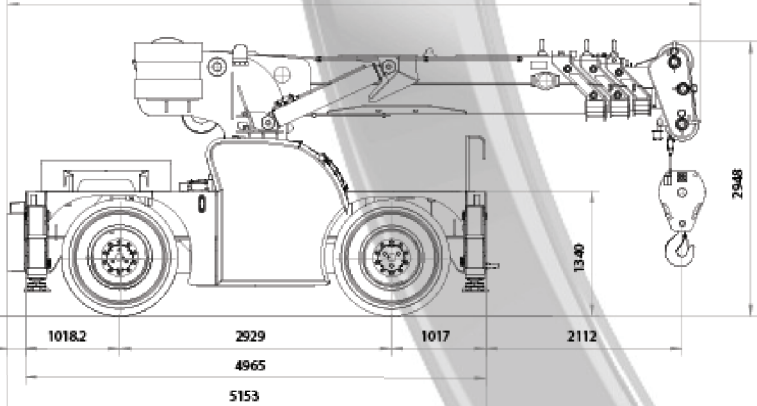
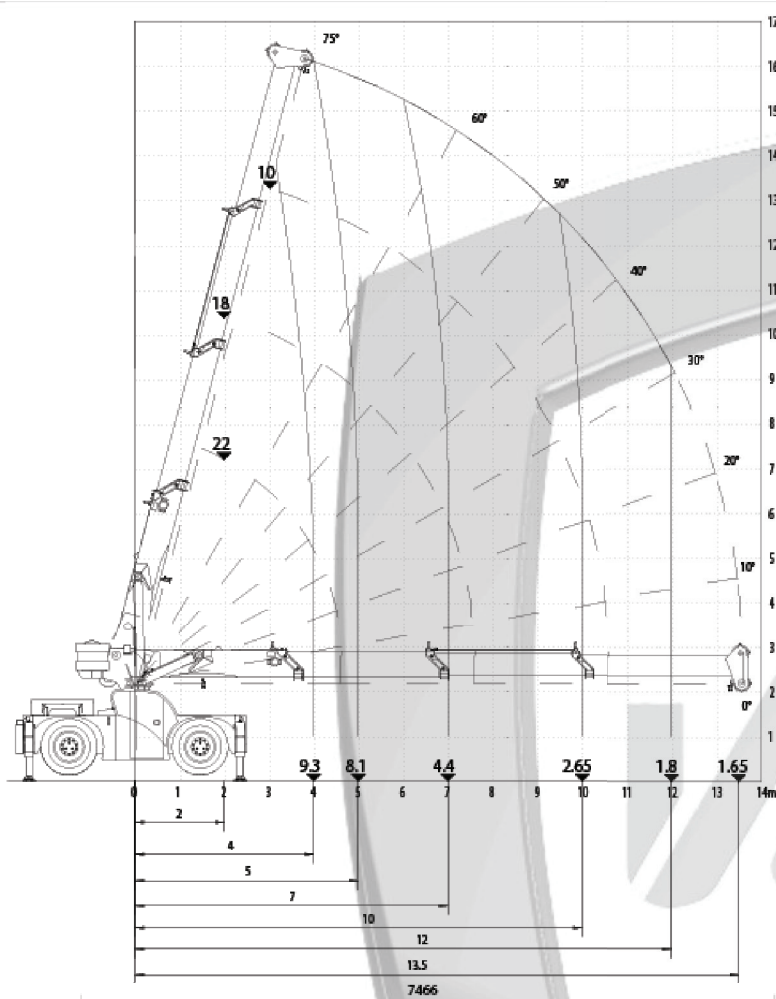
Carry-deck crane with 22.000 kg capacity



FEATURES

MAX CAPACITY 22.000 kg
 MAX BOOM EXTENSION 13,5 m
 MAX BOOM ANGLE 75°
 MINIMUM BOOM ANGLE 0°
 WEIGHT 23.800 kg
 CONFORMITY 2006/42 CE; 2014/30 CE;
 2014/35 CE; 2000/14 CE; EN 13000

CHASSIS	Four-wheeler carry deck frame built from preformed and welded steel plate with counterweight on the turret
OPERATOR CABIN	Ergonomic with high glass surface
WHEELS	FRONT: n°2 super-elastic tyres 12.00 - R24 REAR: n°2 super-elastic tyres 12.00 - R24
TRACTION	With n.2 electric motor 30 Kw 96V AC. All wheel drive system.
BRAKES	Fully hydraulic, multi-disk type operating rear and front wheels, pedal control and hydraulic servo brake, automatic electronic brakes.
PARKING BRAKE	S.A.H.R disc brakes in oil bath on both axles
STEERING	Double steering axles with three different configuration: front steering mode, crab steering mode, articulate steering mode.
BOOM	Manufactured in high quality steel, composed by four elements: main boom and three synchronized hydraulic sections. Hydraulic winch 22T.
TRACTION BATTERY	Armored plates 96 V 775 Ah. Battery charge indicator.
STABILIZATION	4 h-type outriggers installed on 4 independent h-type crossbars 0% - 50% -100%
BOOM'S CONTROL	By CAN-bus joystick inside the cabin
DRIVE CONTROL	By pedals and steering wheel inside the cabin
SAFETY SYSTEM	Electronic load moment indicator (LMI) with display for load, boom's position and boom's angle control.
OPTIONALS	Manual flying jib, radio remote control, on board battery chargers, Intouch® system.



Ergonomic operator cabin



Independent crossbars and outriggers



3T Manual Jib



VALLA MANITEX SRL
Via Leonardo da Vinci 12
29016 - Cortemaggiore (PC) - ITALY

PHONE: +39 0523 256411
EMAIL: info@valla.com
SITE: www.valla.com